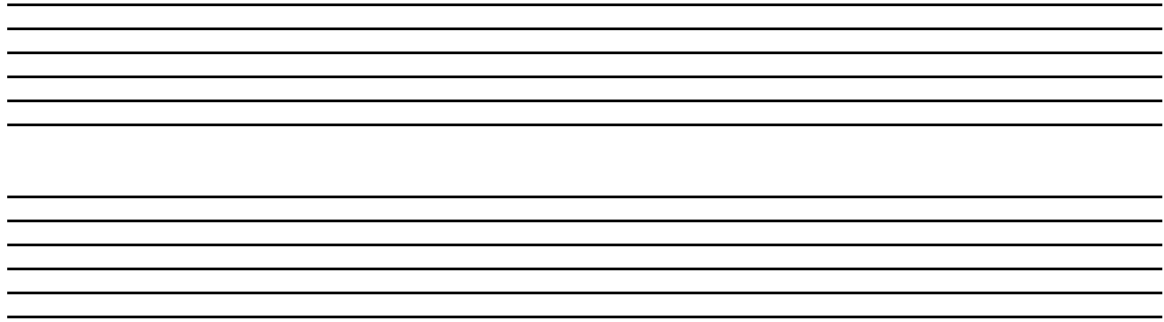


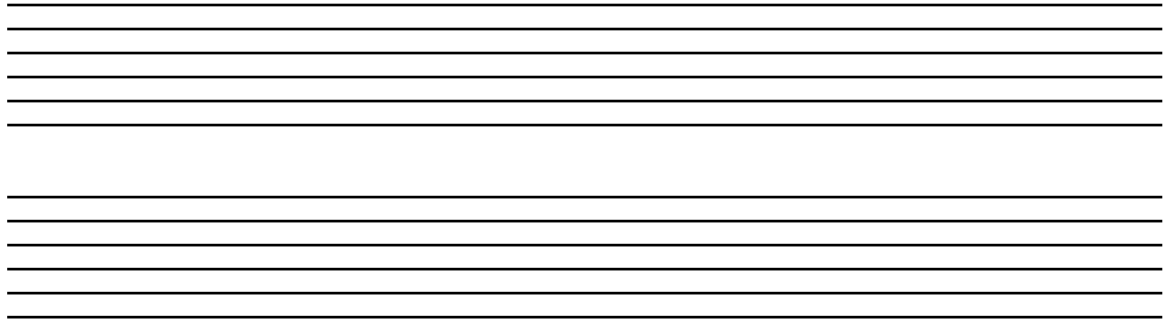
R.G.T. Exercises Grade 4.1

1) **TAB** the following **2 Octave scales** in **2 fingerboard positions**.
Write the **note names** under each one:

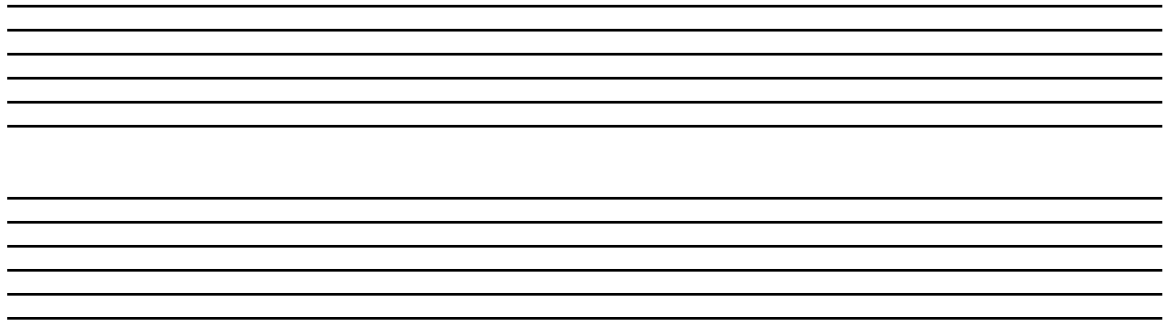
a) _____



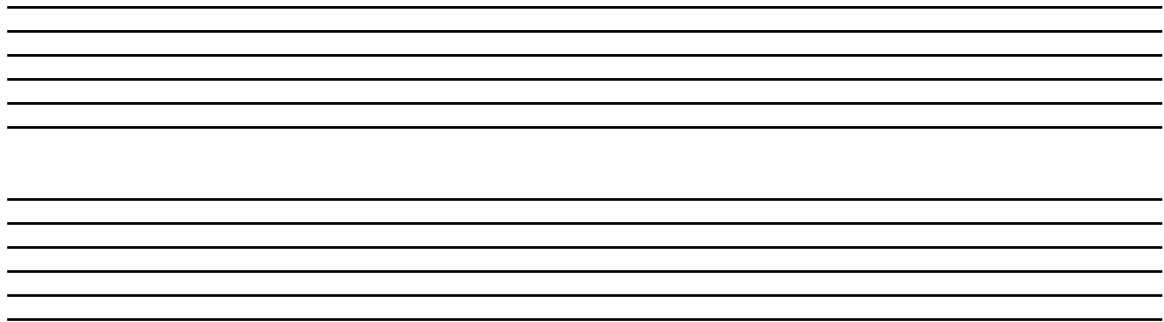
b) _____



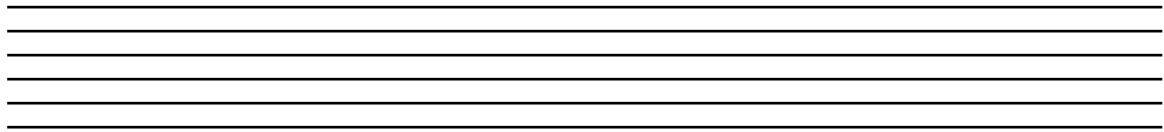
c) _____

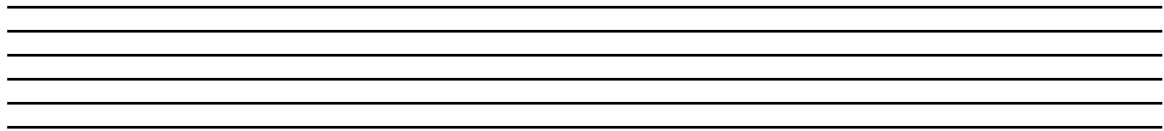


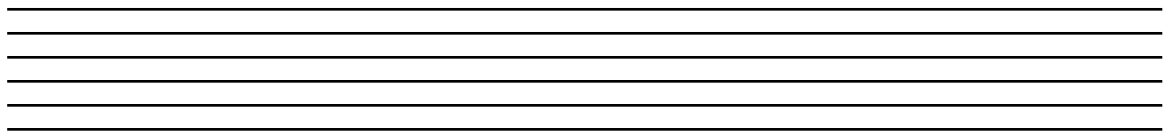
d) _____

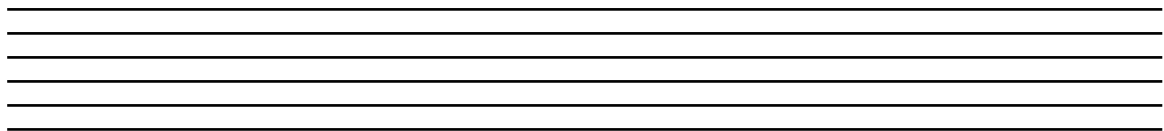


2) **TAB** the following **arpeggios**. **Name** all of the **notes** in each one.

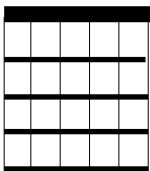
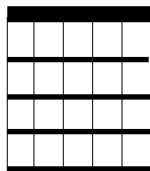
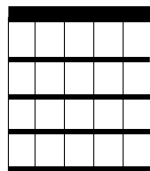
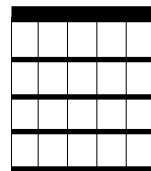
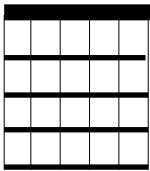
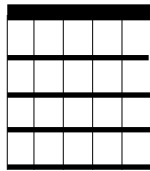
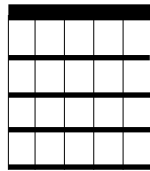
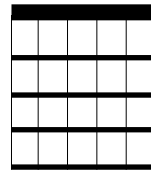
a) _____ 

b) _____ 

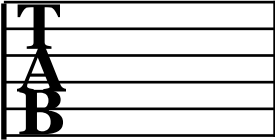
c) _____ 

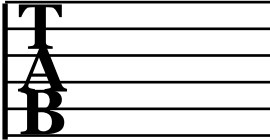
d) _____ 

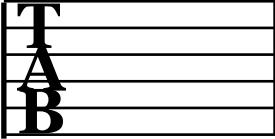
3) **Name** the following chords:

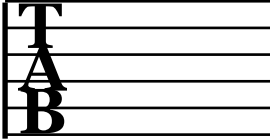
			
a) _____	b) _____	c) _____	d) _____
			
e) _____	f) _____	g) _____	h) _____

4) **Name** the following intervals:

a) _____  A musical staff with five lines. The notes are T on the first line, A on the second line, and B on the third line.

b) _____  A musical staff with five lines. The notes are T on the first line, A on the second line, and B on the third line.

c) _____  A musical staff with five lines. The notes are T on the first line, A on the second line, and B on the third line.

d) _____  A musical staff with five lines. The notes are T on the first line, A on the second line, and B on the third line.

5) **Circle** the correct answers for each question:

a) Playing closer to the bridge:

- i) Wears out your pick faster.*
- ii) Makes your guitar sound louder.*
- iii) Gives you a brighter tone..*
- iv) Looks better on stage.*

b) **ppp** can best be defined as:

- i) Pick three times.*
- ii) Gradually softer.*
- iii) Pick close to the neck.*
- iv) Play as soft as possible.*

c) **Vibrato** can be defined as:

- i) The wavering of the pitch of a note.*
- ii) A loud squealing sound from an amplifier.*
- iii) A famous 19th Century guitarist.*
- iv) Repeating the same note with a rapid picking technique.*

d) A **Bridge Saddle** can be defined as:

- i) The block which supports the guitars neck.*
- ii) The seat upon which the string rests.*
- iii) A type of guitar stand.*
- iv) A round metal tube that can be slid across the strings.*